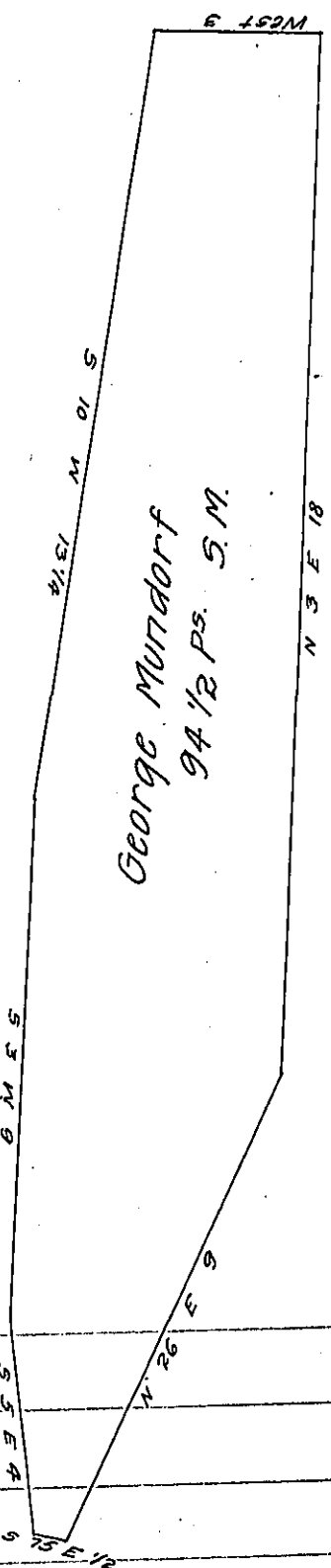


FORM NO 1.

York County Shore



Lancaster County Shore.

A Draught of rock Island situate in the river Susquehanna in  
 Conestoga township Lancaster County opposite the Mouth of Paque —  
 opposite land of George Urey on the York County Shore & below  
 Burkholders Ferry containing ninety four perches and a half Strict  
 measure surveyed in pursuance of a warrant dated 21<sup>st</sup> day of  
 September 1818 granted to George Munday

Jacob Hieshman D.S.

To Jacob Spangler Esq.

Surveyor General.

IN TESTIMONY that the above is a copy of the original remaining on file in  
 the Department of Internal Affairs of Pennsylvania, made  
 conformably to an Act of Assembly approved the 16th day of  
 February, 1833, I have hereunto set my Hand and caused  
 the Seal of said Department to be affixed at Harrisburg,  
 this thirtieth day of November 1907.

*Henry Houck*  
 Secretary of Internal Affairs.